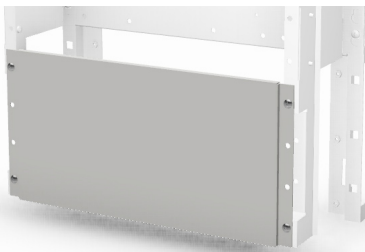




A901-CHASSIS-CP

The 901 Series Control Panel Chassis provides the framework for mounting 901 Series components. This unique chassis design allows all components to be wired, configured, and tested prior to installation into the wall box. All field-wire terminations are easily accessible and identified easing installation time and effort. A terminal block mounting plate is included for mounting optional modules or custom terminal blocks.

The 901-CHASSIS-CP is used for 901 Series Fire Alarm Control Panels (FACP) as well as Notification Appliance Control Panels (NACP) and mount into 901 Series Cabinets (see bulletin F-555) or can be retrofit into National Time 7000 Series cabinets.



A901-BLANK

901 Series Blank plates are used to cover the middle and bottom slots of the A901-CHASSIS-CP when local annunciators switches or microphone are not desired. Includes screws and clip nuts.



A901-CHASSIS-AMP

The 901 Series Amplifier Chassis provides mounting for up to (3) A901-AMP amplifiers in either 25W, 50W or 100W sizes as well as space for (2) additional A901-CTRL control module assemblies. All components can be wired, configured, and tested prior to installation into the wall box. Easily accessible field-wiring terminals are provided simplifying installation.

The A901-CHASSIS-AMP mounts into the 901 Series Cabinets and is typically configured with a solid door since there are no user controls inside.

UL Listed

